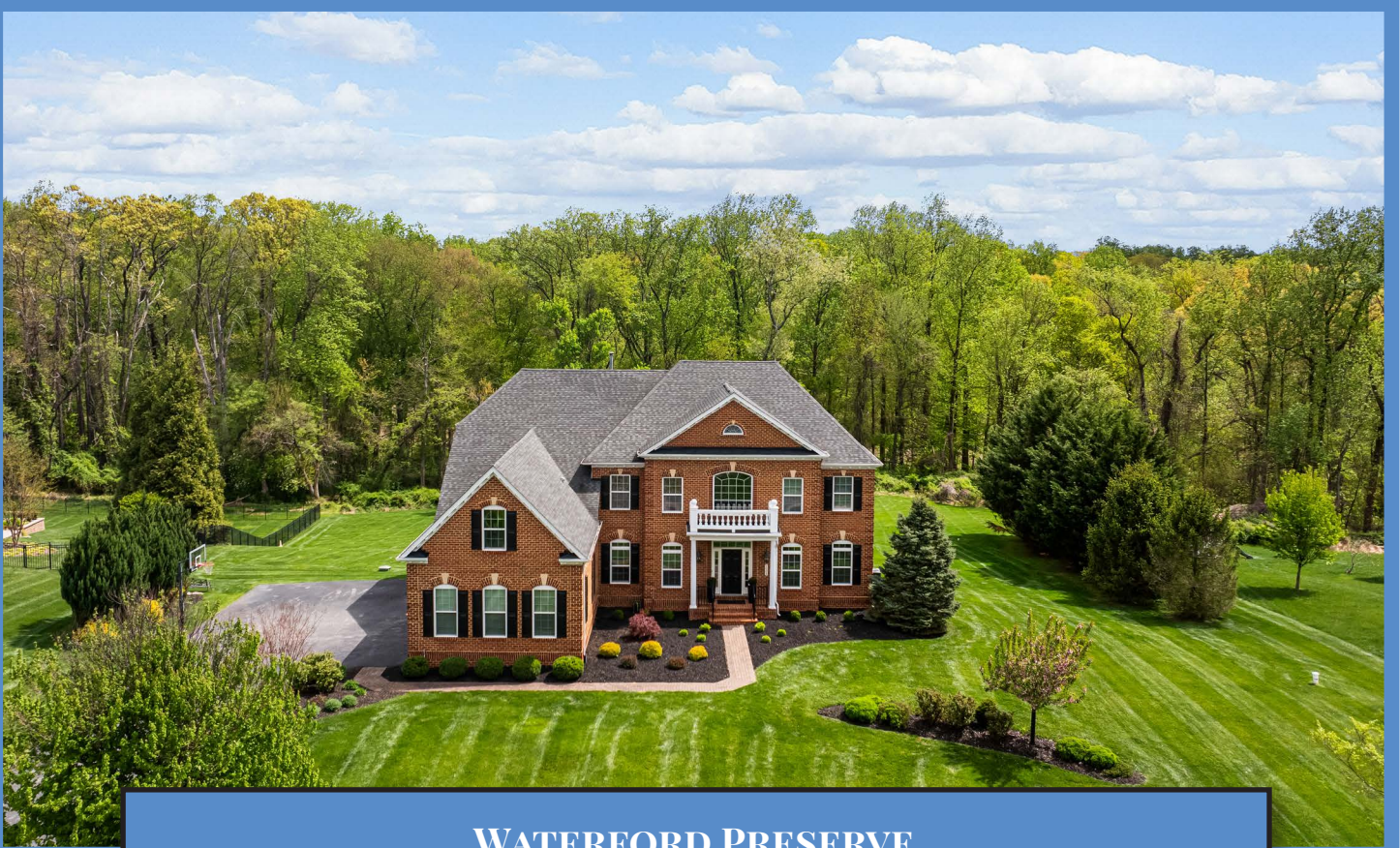
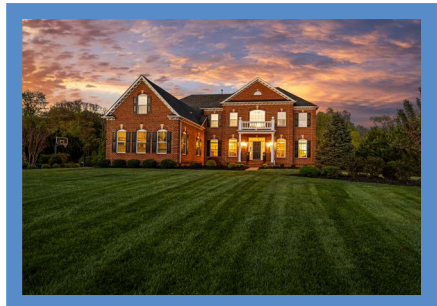
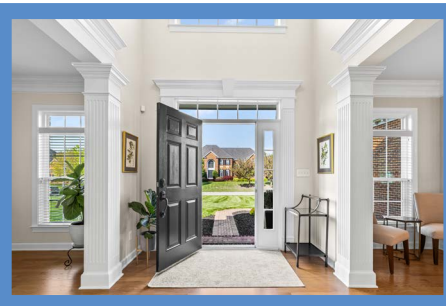
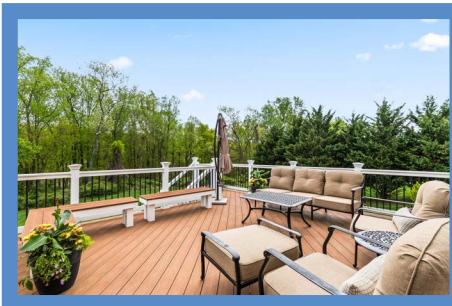


*Hubble
Bisbee*

CHRISTIE'S
INTERNATIONAL REAL ESTATE

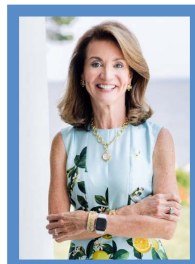


WATERFORD PRESERVE
1004 COACHFORD COURT




LOCATIONS

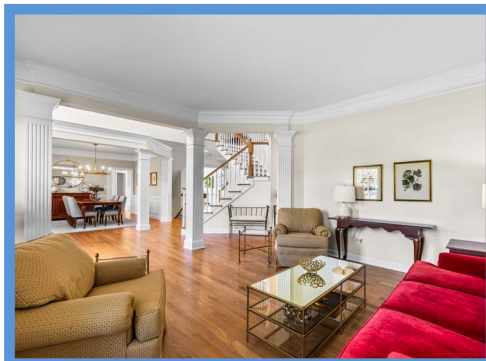
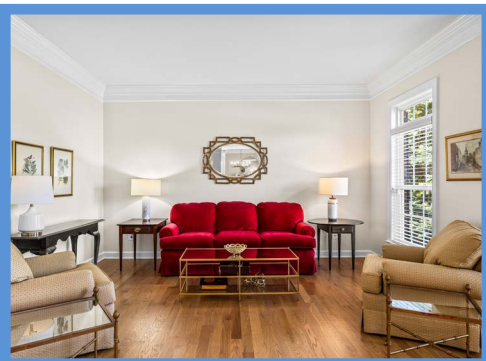
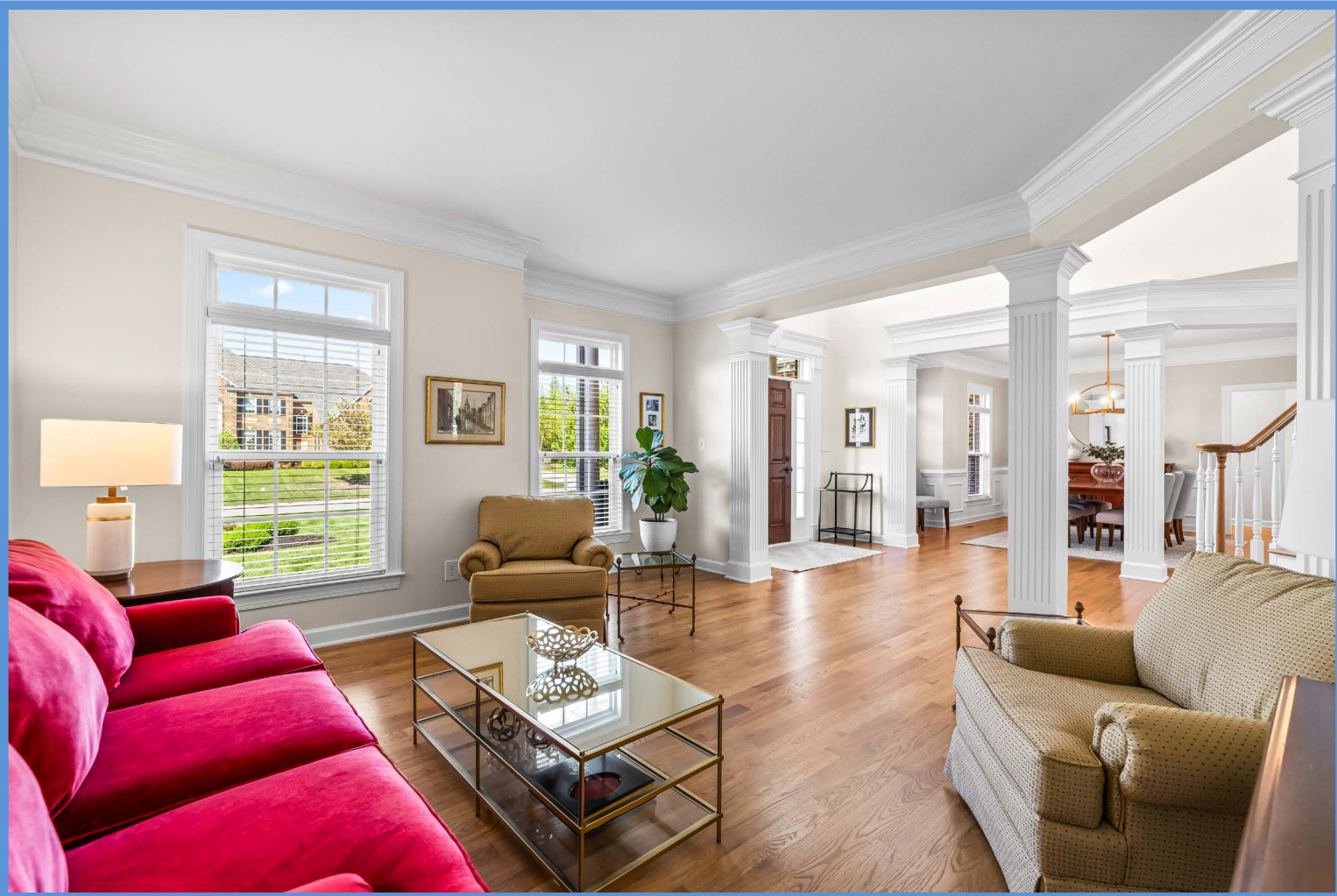
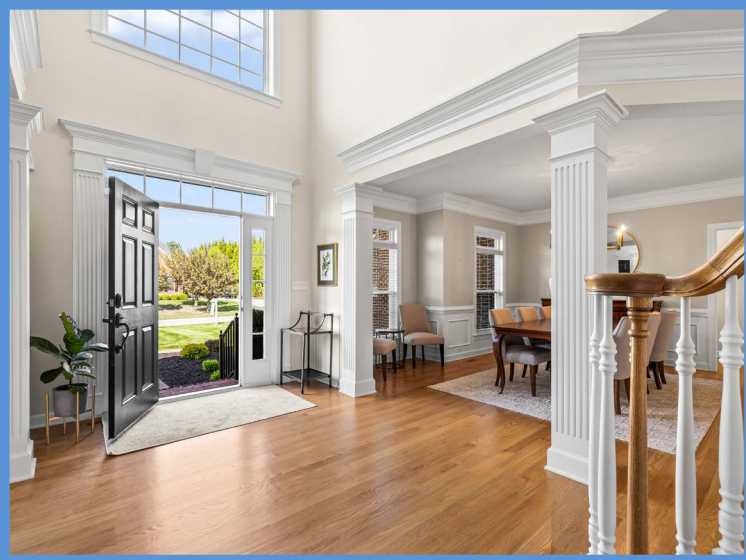
2330 W Joppa Road, Suite 104
Lutherville, MD 21093
181 Harry S Truman Pkwy Ste 200
Annapolis, MD 21401

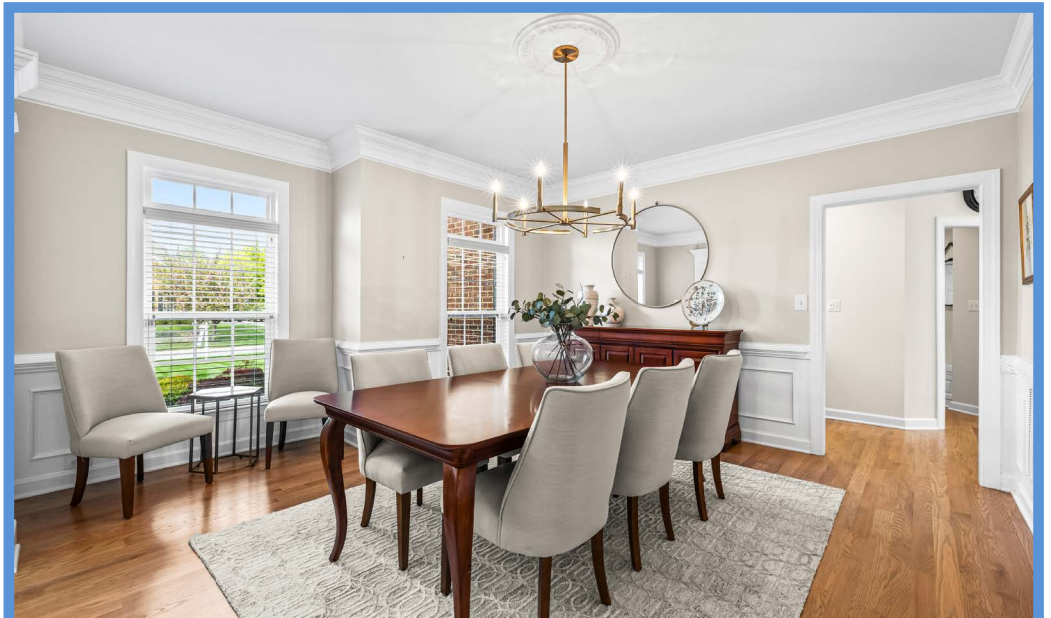


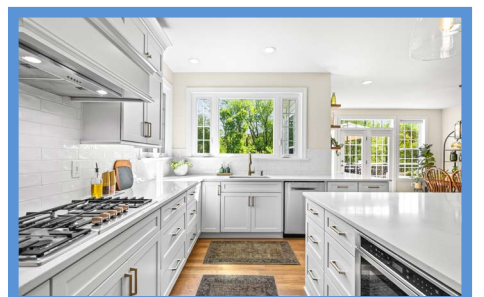
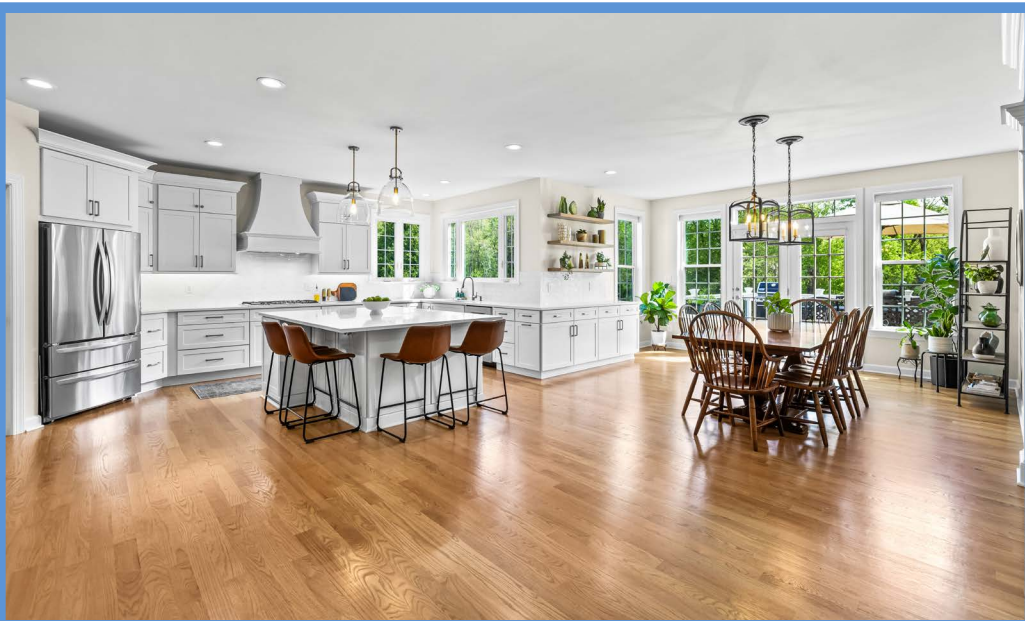
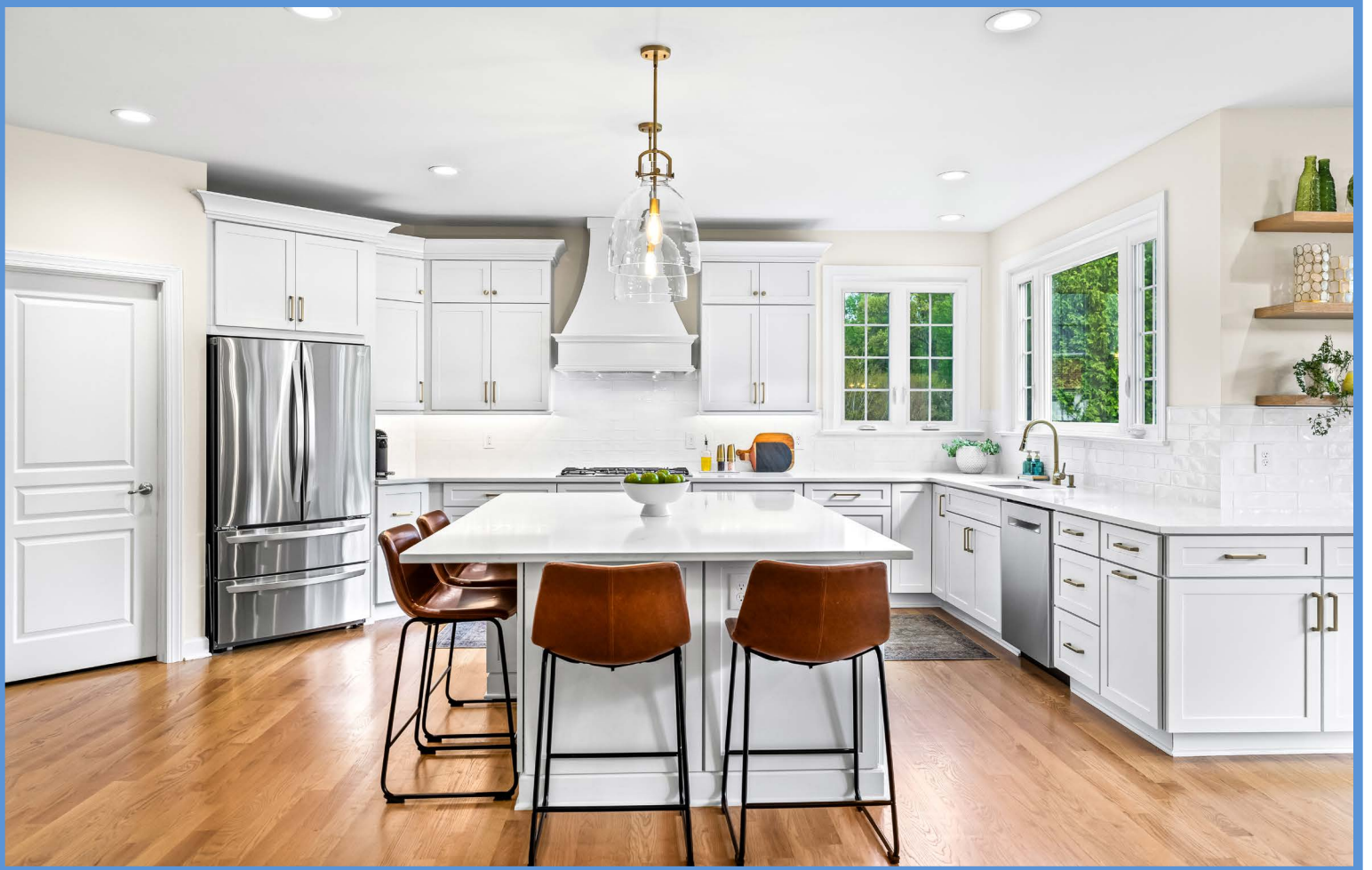
KAREN HUBBLE BISBEE

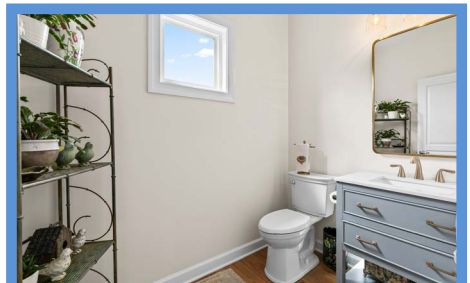
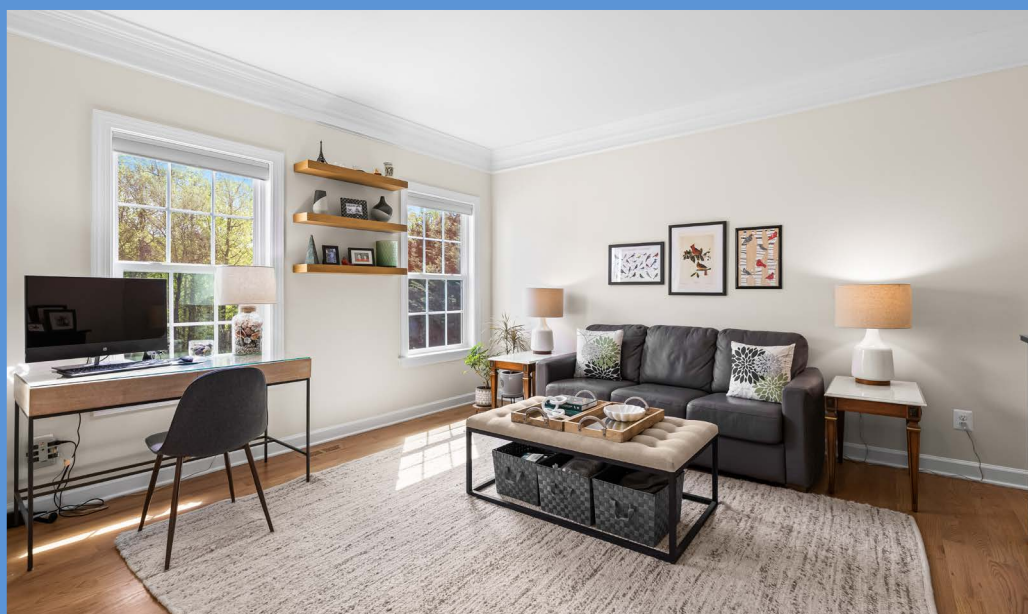
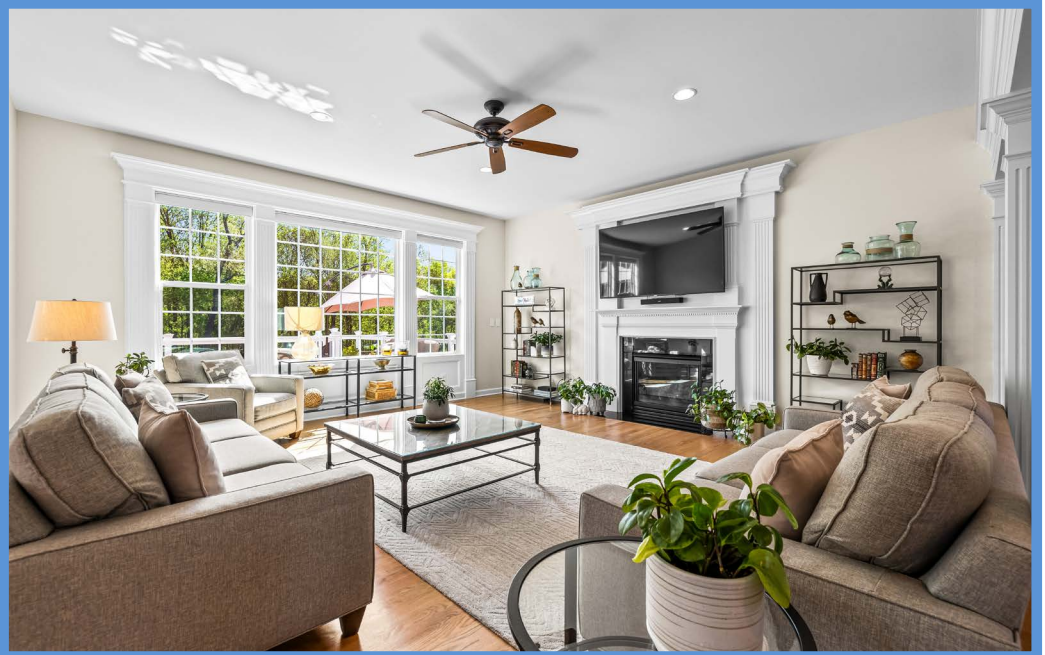
Principal, Associate Broker, ABR, GRI
Karen@HubbleBisbee.com
443-838-0438 (Mobile)
410-321-1411 (Office)

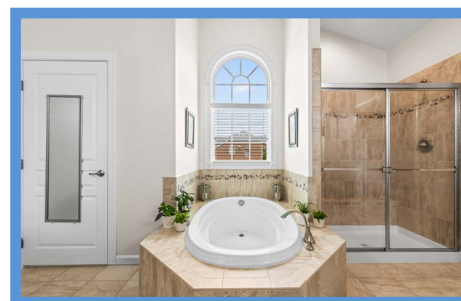
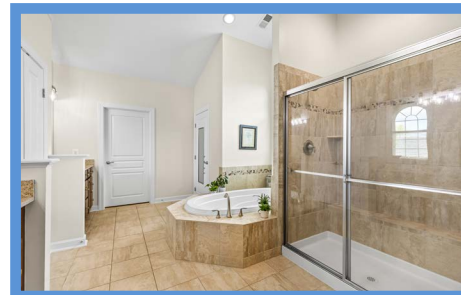
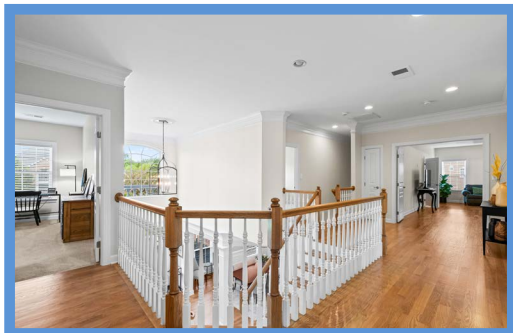
WWW.HUBBLEBISBEE.COM | (410) 321-1411 (OFFICE) | 

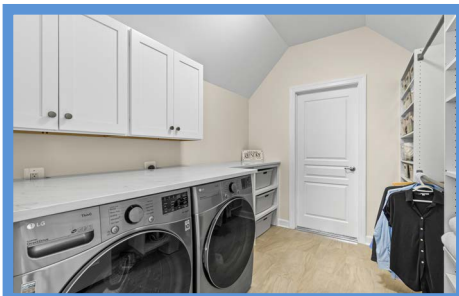
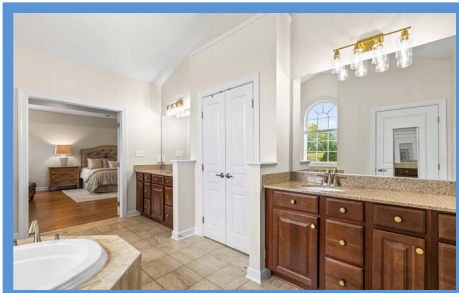
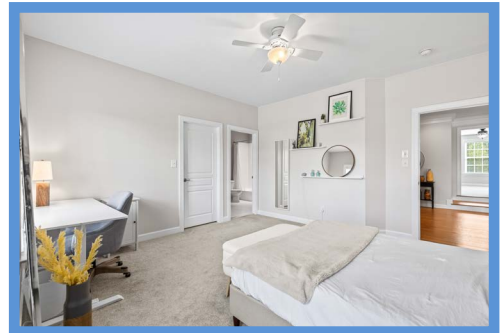
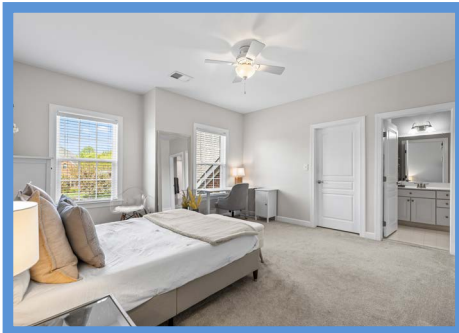












FOYER 11'5" X 9'3"

- Paneled entry door with transom, sidelights and fluted pilaster trim
- Two-story
- Hardwood flooring
- Classic open oak staircase with hardwood handrails and painted spindles
- Carpeted open staircase to Lower Level with hardwood handrails
- Large arched window above entry
- Built-up crown molding
- Flows to additional Hall (24'1" X 17'7") with access to Office with shelved closet, access to Powder Room and open flow to Family Room
- Coat closet
- Large bronze hanging lantern with ceiling medallion
- Recessed lighting
- Open flow to Family Room and Kitchen through fluted columns
- Open flow to Living Room and Dining Room through fluted columns

LIVING ROOM 16'1" X 15'1"

- Hardwood flooring
- Two windows with transoms and plantation blinds
- Built-up crown molding

DINING ROOM 16'1" X 14'8"

- Hardwood flooring
- Two windows with transoms and plantation blinds
- Built-up crown molding
- Chair rail with wainscot moldings
- Modern 6-light brass chandelier with ceiling medallion
- Cased portal to Butler's Pantry and Kitchen

OFFICE 14'10" X 14'9"

- Access through French doors with transom
- Hardwood flooring
- Two windows with pleated shades
- Built-up crown molding
- Wall mount shelving

POWDER ROOM

- Hardwood flooring
- Vanity with quartz top, undermount sink, framed mirror and overhead lighting
- American Standard flush
- Window
- Exhaust fan

FAMILY ROOM 20'2" X 18'9"

- Hardwood flooring
- Gas fireplace on paneled chimney wall with colonial mantel, fluted pilasters, crown molding, over-mantel panel, granite surround and hearth
- Triple window with pleated shades, fluted pilasters, crown molding and wainscot
- Recessed lighting
- Ceiling fan
- Samsung wall mounted TV with Bose soundbar
- Open flow to Kitchen through fluted columns

KITCHEN 39'2" X 25'3"

- Updated 2022
- Hardwood flooring
- White Shaker style cabinetry including island/breakfast bar, custom range hood enclosure, pot-pan drawers, roll-out trays, lazy-Susan base cabinet, upper tier wall cabinets, pull-out trash/recycle bins, wall mount oak shelving, dovetailed drawers, soft-close cabinets/drawers and matching crown trim
- Butler's pantry at Dining Room with matching cabinetry including glass-door cabinets and under-cabinet lighting
- Quartz counters
- Subway tile backsplashes
- LG stainless steel French door refrigerator
- Bosch stainless steel 5-burner gas cooktop with range hood vent and lighting
- GE stainless steel double wall oven
- Bosch stainless steel built-in microwave
- Bosch stainless steel dishwasher
- Oversize stainless steel undermount sink with Insinkerator disposal
- Large breakfast area with French doors with transom to deck, 3 windows, pleated shades and 2 bronze finish pendant lights
- Picture window and additional window at sink
- Walk-in pantry closet
- Recessed lighting
- Two glass globe pendant lights above island
- Open back staircase to Upper Level
- Access to Back Hall

BACK HALL

- Hardwood flooring
- Alcove with built-in storage/seating bench

- Coat closet
- Recessed light
- Access to Garage
- Access to Mudroom

MUDROOM 8'0" X 7'7"

- Luxury vinyl plank flooring
- Craftsman style wainscot
- Custom built-in mudroom bench with under-bench shoe storage, upper storage bins and coat hooks
- White shaker style base and wall cabinets
- Quartz counter
- Stainless steel undermount sink
- Frigidaire stainless steel refrigerator
- Window
- Ceiling light

GARAGE 31'6" X 19'10"

- Oversize 3-car
- Finished
- Automatic door openers
- Five windows with pleated shades
- Storage shelving and ceiling mount bicycle hoists

UPPER LEVEL

HALL 22'11" X 16'0"

- Landing for main staircase with wraparound overlook to Foyer
- Open back staircase to Kitchen
- Hardwood flooring
- Built-up crown molding
- Linen closet
- Recessed lighting

PRIMARY BEDROOM

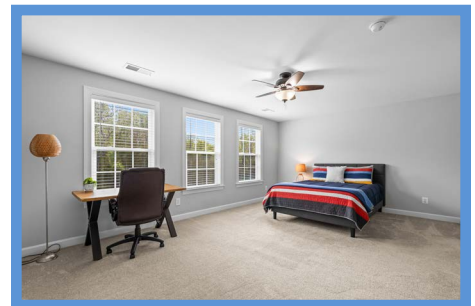
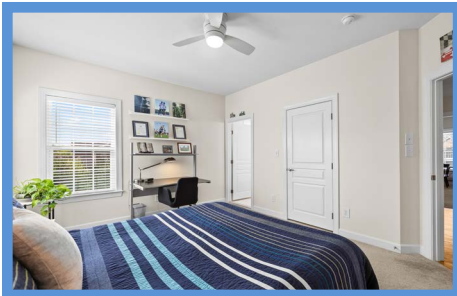
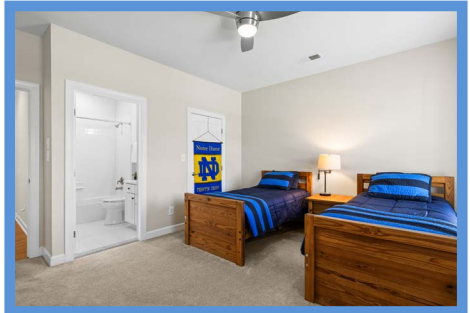
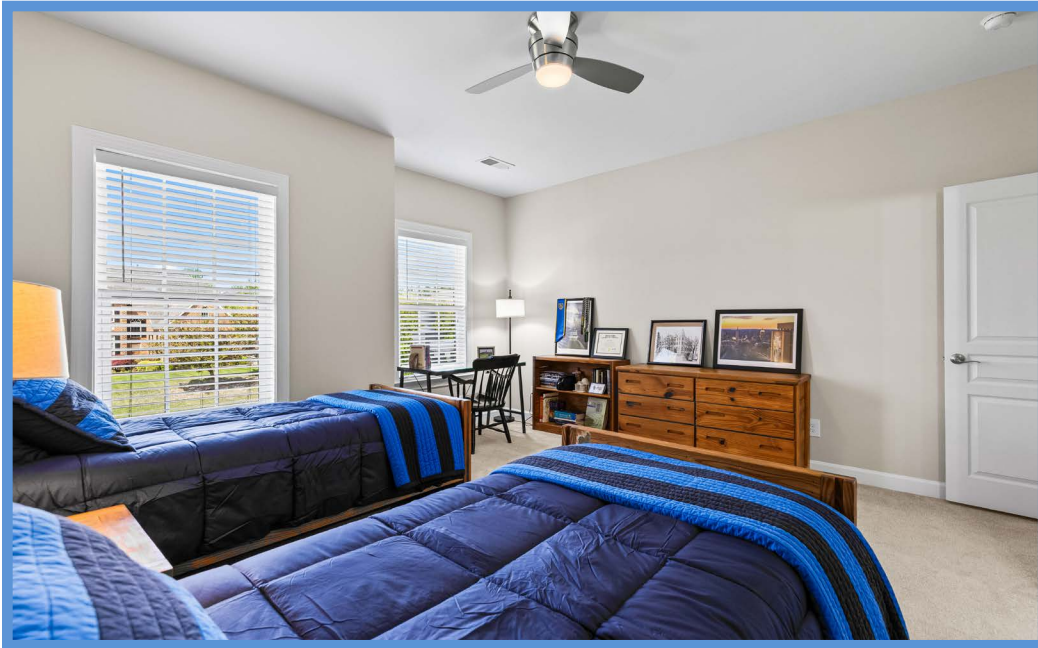
25'0" X 16'10"

- Double door entry
- Hardwood flooring
- Octagonal tray ceiling with crown molding
- Three windows with wood blinds
- Recessed lighting
- Ceiling fan

PRIMARY BATH

14'9" X 11'10"

- Double door entry
- Vaulted ceiling
- Marble finish ceramic tile floor, tub platform and shower stall with mosaic borders
- Two matching vanities each with granite top, undermount sink, plate glass mirror and overhead lighting
- Soaking tub



- Dual-head shower stall with sliding glass doors and recessed light/exhaust fan
- Water closet with Kohler flush and window
- Arched window with wood blind at tub
- Linen closet
- Recessed lighting
- Access to Laundry Room

LAUNDRY ROOM

10'6" X 8'0"

- Vinyl tile flooring
- Washer/dryer enclosure with adjacent open bins with quartz folding counter
- Shaker style wall cabinets
- Open shelving and clothes bars
- LG washer and dryer
- Ceiling light
- Access to Dressing Room

PRIMARY DRESSING ROOM

20'1" X 8'0"

- Wall-to-wall carpeting
- Custom fitted wardrobe cabinetry including clothes bars, open shelving, drawers and shoe shelving
- Window with wood blind
- Ceiling lights

BEDROOM 2 18'11" X 13'1"

- Step-up from Hall
- Wall-to-wall carpeting
- Three windows with wood blinds
- Walk-in closet
- Wall mount shelving
- Ceiling fan with light
- Private Bath

BATH 8'0" X 6'0"

- Ceramic tile floor and tub surround
- Vanity with solid surface top and seamless sink, plate glass mirror and overhead lighting
- Tub/shower combination with recessed light/exhaust fan
- Gerber flush

BEDROOM 3 14'9" X 12'9"

- Wall-to-wall carpeting
- Two windows with wood blinds
- Walk-in closet
- Wall mount shelving
- Ceiling fan with light
- Private Bath

BATH 7'6" X 5'1"

- Ceramic tile floor and tub surround
- Vanity with solid surface top and seamless sink, plate glass mirror and overhead lighting
- Tub/shower combination with recessed light/exhaust fan
- Kohler flush
- Window with mini-blind

BEDROOM 4 16'1" X 14'9"

- Wall-to-wall carpeting
- Two windows with wood blinds
- Walk-in closet
- Ceiling fan with light
- Private Bath

BATH 7'6" X 5'4"

- Ceramic tile floor and tub surround
- Vanity with solid surface top and seamless sink, plate glass mirror and overhead lighting
- Tub/shower combination with recessed light/exhaust fan
- Kohler flush

BEDROOM 5 16'1" X 14'7"

- Wall-to-wall carpeting
- Two windows with wood blinds
- Walk-in closet
- Wall mount shelving
- Ceiling fan with light
- Private Bath

BATH 10'2" X 7'1"

- Ceramic tile floor and tub surround
- Vanity with solid surface top and seamless sink, plate glass mirror and overhead lighting
- Tub/shower combination with recessed light/exhaust fan
- Gerber flush

LOWER LEVEL

RECREATION ROOM

32'1" X 29'9"

- Carpeted staircase access
- Wall-to-wall carpeting and laminate flooring
- Two windows with wood blinds
- Atrium door to yard
- Recessed lighting
- Wall mount TV excluded
- Large unfinished storage room

BEDROOM 6 14'11" X 14'3"

- Wall-to-wall carpeting
- Double window with wood blinds
- Large double closet
- Ceiling fan with light

BATH 10'6" X 5'1"

- Ceramic tile floor and tub surround
- Vanity with solid surface top and seamless sink, plate glass mirror and overhead lighting
- Tub/shower combination with recessed light/exhaust fan
- Kohler flush

GYM 31'3" X 15'7"

- Dual access
- Partially finished
- Low-impact interlocking flooring tiles
- Ceiling lights
- Hisense wall mount TV
- Additional access to Utility/Storage Room

UTILITY/STORAGE ROOM

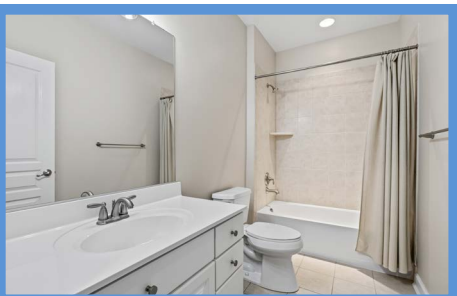
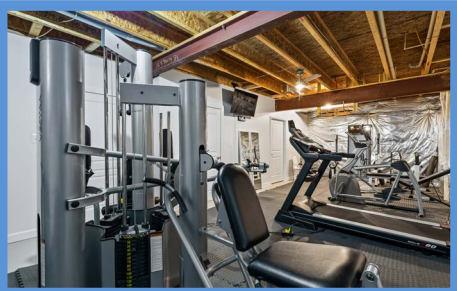
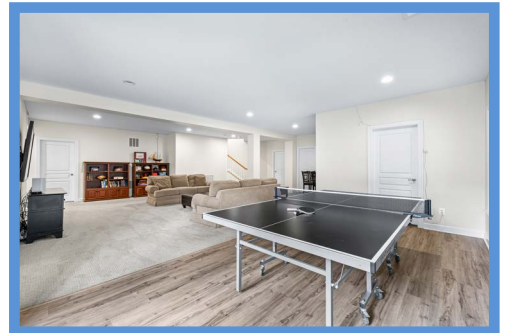
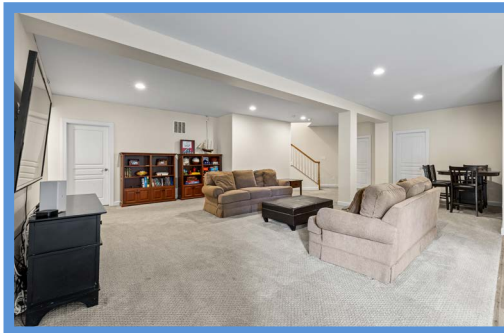
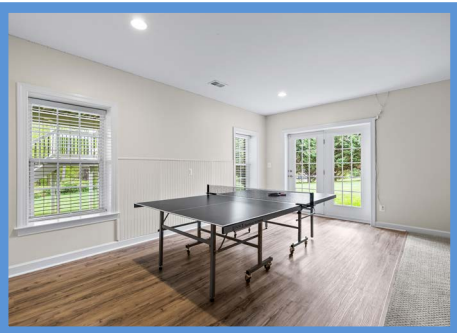
45'0" X 16'8"

- Unfinished
- HVAC unit with gas heat and Aprilaire humidifier
- AO Smith gas-fired water heater-2025
- Well water tank and conditioning system
- Electric service panels
- Wall mount shelving
- Heavy duty storage shelving

EXTERIOR

- Built by NV Homes
- Brick colonial with beaded vinyl siding on back
- Architectural asphalt shingle roof
- Covered brick porch at main entry with classic columns and roof balustrade
- Brick paver front walkway
- Elevated rear deck (35' X 19') with engineered wood decking, vinyl railings, gated staircase to yard and access from Kitchen
- Parking pad at garage
- Great location in the Waterford Preserve community on 2.61 acres

All information contained herein deemed reliable but not guaranteed by the Broker





*Hubble
Bisbee*

CHRISTIE'S
INTERNATIONAL REAL ESTATE

GREEN SPRING
STATION
410-321-1411

ANNAPOLIS
410-321-1833

